



Sanadi Group of Industries is known as top Manufacturer, Exporter, Supplier, Trader, Service Provider and Distributor of best Access Control System, Belt Conveyors, Control Panel Boards, Conveyor Systems and Conveyors.



Automatic Sliding Gate Operator



Cane Feeder Table



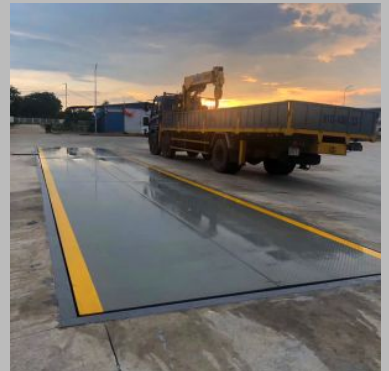
Convention Shed



Electric Motor Shaft



Industrial Structural Fabrication



Pit Type Weighbridge



About Sanadi Group of Industries

Sanadi Group of Industries is a leading manufacturer and service provider specializing in custom fabrication and comprehensive design services. With over two decades of industry experience, PFDS is committed to delivering exceptional quality, innovative solutions, and unparalleled customer service. Our state-of-the-art facilities and skilled workforce enable us to meet the diverse needs of our clients across various sectors, including aerospace, automotive, construction, and industrial manufacturing.

Vision Statement:

To be the most trusted and respected fabrication and design service provider, known for our commitment to quality, innovation, and customer satisfaction.

Our product and services

We are prominently dealing with products like Electronic Weighbridge Systems, Weighbridge Indicators, Industrial Equipment, Jumbo Display Indicators, and Industrial Electrical Panel Board. Apart from that we are also dealing with the services like Consumer Fabrication Services and PCB Designing Services.

Why choose us

Experienced Team: Our team of engineers, designers, and fabricators brings a wealth of knowledge and expertise to every project.

Cutting-Edge Technology: We use the latest tools and software to ensure precision and efficiency.

Customer-Centric Approach: We work closely with our clients to understand their needs and deliver customized solutions.

Proven Track Record: With a portfolio of successful projects and satisfied clients, we have built a reputation for excellence in the industry.

Competitive Pricing: We offer high-quality services at competitive prices, ensuring value for our clients.



Factsheet

Basic Information

Nature of Business : Manufacturer / Exporter / Supplier / Trader / Service Provider / Distributor

Contact Person : Mr. Imrankhan Inamdar

Registered Address : 1366/B/11, Near Girish Cinema Hall, Dutta Park Road, Kolhapur,
Maharashtra

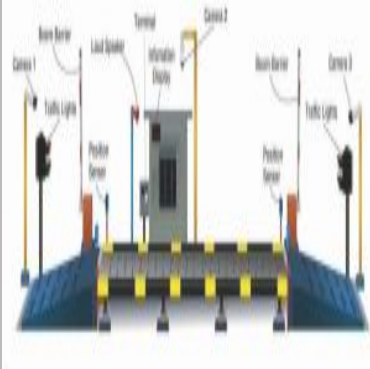
Total Number of Employees : Below 20

Year of Establishment : 2010

Legal Status of Firm : Individual (Sole proprietorship)



Weighbridges



Unmanned Weighbridge



Pitless Type Weighbridge



Pit Type Weighbridge



Industrial Weighbridge
Structure



Convention Shed



Automated Weighbridge
System



Load Cell



Shear Beam Load Cell



Power Load Cell



High Precision Digital
Load Cell



Electric Motor Shaft



Cup Ball Type Load Cell



Compression Type Load
Cell



Weighing Machine



Premium Weighbridge
Indicator



Elite Weighbridge
Indicator



Advance Weighbridge
Indicator



Contact Us

Sanadi Group of Industries

Contact Person : Mr. Imrankhan Inamdar



1366/B/11, Near Girish Cinema Hall, Dutta Park Road



08048772061



sales@sanadigroup.com



<https://www.exportersindia.com/sanadi-group-of-industries>