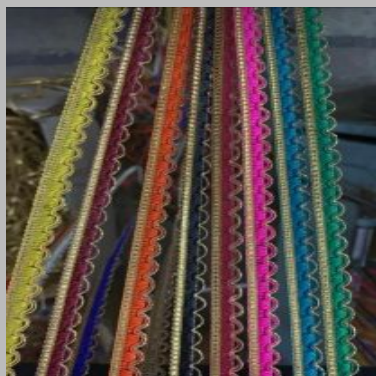


We are leading name engaged as Manufacturer, Exporter and Supplier of wide range of Badges, Emblems & Lanyards, Crocia Laces, Embroidered Fabric, Embroidered Laces and Embroidery Work & Embroidery Fabric etc...



Colored Lace



Cutdana Lace



Cutwork Lace



Dupatta Lace



Embroidery Lace



Jarkan Lace



Swati Lace

About Swati Lace

Discover the world of artistic elegance and creative finesse at **Swati Lace**, a distinguished name in the realm of designer laces and embellishments. As a seasoned **manufacturer, exporter, and supplier**, we take immense pride in adorning garments and fabrics with our captivating range of products. Since our establishment in **1960** by the visionary Mr. Gaurav Jain, we have been a beacon of innovation and craftsmanship in the heart of **Surat, Gujarat**.

Mr. Gaurav Jain, a stalwart in the world of textile embellishments, laid the foundation of Swati Lace with a simple yet powerful vision - to infuse traditional crafts with contemporary designs. His unwavering dedication to preserving age-old artistry while embracing modern aesthetics has been instrumental in establishing Swati Lace as a trusted name in the industry.

With a legacy spanning over six decades, Swati Lace has evolved into a paragon of creativity and quality. Under the guidance of our esteemed founder, Mr. Gaurav Jain, we have not only kept up with the dynamic trends of the fashion industry but also set new benchmarks through our distinctive offerings. Our commitment to excellence and passion for intricate details have positioned us as a leader in the field.

Swati Lace stands as a testament to the confluence of art, heritage, and innovation. We are dedicated to enhancing the beauty of fabrics and clothing, one meticulously crafted piece at a time. Join us on this journey of elegance and sophistication.



Factsheet

Basic Information

Nature of Business : Manufacturer / Exporter / Supplier

Contact Person : Mr. Gaurav Jain

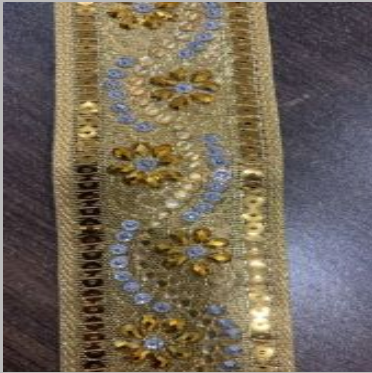
Registered Address : Plot No. 2/4544, Shivdas Zaveri in Pole, Main Road, Surat, Gujarat

Total Number of Employees : Below 20

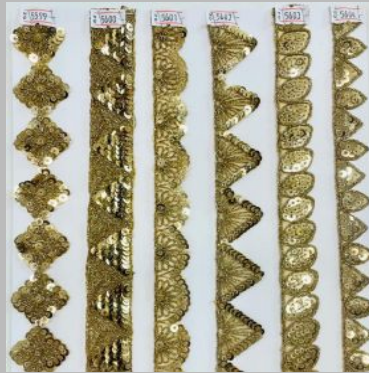
Year of Establishment : 1960

Legal Status of Firm : Individual (Sole proprietorship)

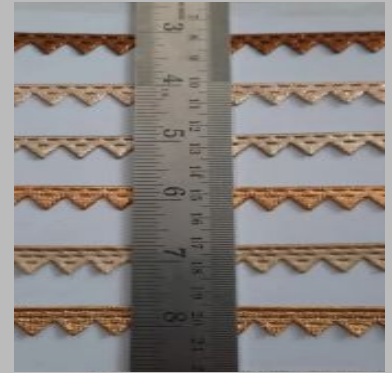
Laces



Stone Lace



Sequence Lace



Samosa Lace



Rapier Lace



Organza Lace



Multicolor Lace

Garment Lace



Silver Lace



Piping Lace



Jhalar Lace



Dyeable Lace

Polyester Fabrics



Polyester Position
Printed Fabric



Export Quality Dupion
Polyester Fabric



Digital Printed Polyester
Fabric





Swati Lace

Contact Us

Swati Lace

Contact Person : Mr. Gaurav Jain

 Plot No. 2/4544, Shivdas Zaveri in Pole, Main Road

 swatilace@gmail.com

 <https://www.exportersindia.com/swati-lace>