

We Vishwa Automation & Control Solutions are a leading and distinguished Manufacturer, Exporter, Supplier, Retailer, Trader, Distributor, Importer and Service Provider of quality , Auto Electrical Parts & Components, Automation Products, Breaker Panels and Circuit Breaker.



Simatic 1221 Siemens
Digital Input Module



Selec APFC Controller



Selec PID Controller



TM262L20MESE8T
Schneider
Programmable Logic
Controller

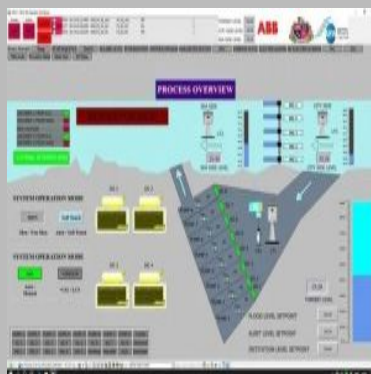


ABB Compact HMI Panel



Stuke ECO AMF Auto
Mains Failure Relay

About Vishwa Automation & Control Solutions

Vishwa Automation & Control Solutions are dealt with in both Automation sector like Home Automation and Industrial Automation. Vishwa Automation and control solutions is specialised in application based turnkey solutions to satisfy customer requirements for Industrial Automation, Home Automation and Security Systems.

We have a prominent presence in various industries like Water, Chemical, Pharmaceutical, Power, Fertilizers, Metal, Food & Beverages, Agro chemicals, Cement, and Textile. Our business area covers Consultancy, Design, Engineering, Manufacturing, Installation and commissioning of Automation & Electricals projects.

Our proven automation Solutions that match our customers business needs & to associate. We are committed to serve best technology & solutions in Automation to our clients/customers to achieve a competitive edge in rapidly changing world

We are engaged in Presenting wide gamut of PLC & Drive control Panels that are highly acclaimed in the market for their quality features like low power consumption, stability, higher output and compact design. These panels are made by our competent professionals by using superior grade raw material and as per the international quality standards. Besides, These panels find wide application in various industries and are capable of higher output and less power consumption. We specialize in providing different types of motor control center(MCC)Panels that are highly appreciated in the electrical industry. These panels are manufactured using high grade raw material and therefore, exhibit high and Features. Moreover, these panels are compartmentalized/Non Compartmentalized type panels with ACB/MCCB,SFU&DOL.

Our Clientele

Aarti Industries Lupin Adani Cadila Praj Essar Energy RLG Group SMT Unichem

Why Us?

Competitive rates Application based solutions Industry standard quality processes 21CFR Documents and Validation of Computerised System Employment consultant Environmental consultant Provide engineering support to supplement company resources Valued and trusted resource that can be available to your company 24 X 7 We do work as Freelance and give Service support for Automation Products One Stop Solution for all Electrical, Instrumentation ,Industrial Automation, Home Automation, Office Automation and Security Systems

Factsheet

Basic Information

Nature of Business : Manufacturer / Exporter / Supplier / Retailer / Trader / Distributor / Importer / Service Provider

Contact Person : Mr. Pradip Vishwakarma

Registered Address : Shop No.5, Savani Shopping Center, Kohinoor Road, Surat, Gujarat

Total Number of Employees : 6 - 20

Year of Establishment : 2020

Legal Status of Firm : Individual (Sole proprietorship)

Computer Cables, Adapters & Modules



TM3DQ16TG Schneider
Digital Output Module



TM3AI4G Schneider
Analog Input Module



TM3AI2HG Schneider
Analog Input Module



SM 1221 Siemens Digital
Input Module



Simatic S7-1200
Siemens Digital Input
Output Module

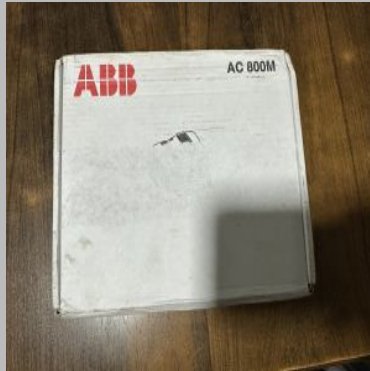


DX561 ABB Digital Input
Output Module

Instrumentation & Control Equipment



pm866ak02
3bse081637r1 ABB PLC



pm866ak01
3bse076939r1 ABB PLC



CP610 ABB HMI
Operator Panel



CP607 ABB HMI
Operator Panel



CP604 ABB HMI
Operator Panel



ci867a 3bse092689r1
Modbus, ABB PLC

Logic Controllers



TM262L20MESE8T
Schneider
Programmable Logic
Controller



TM262L10MESE8T
Schneider
Programmable Logic
Controller



PM591-ETH ABB
Programmable Logic
Controller



PM583-ETH ABB
Programmable Logic
Controller



PM573-ETH ABB
Programmable Logic
Controller



PM572 ABB
Programmable Logic
Controller



1SAP212200R0001
TU515 ABB Terminal
Base Unit



1SAP112100R0270
TB521-ETH ABB
Terminal Base Unit



TB511-ETH ABB
Terminal Base Unit



Selec APFC Controller



Schneider TMCR2AI2
Image Electric Cartridge



Schneider Preform Cable

Human Machine Interface



MT8102iE1 Weintek
Human Machine Interface



MT8071iE1 Weintek
Human Machine Interface



KTP700 Siemens
Simatic Basic HMI Panel



KTP1200 Siemens
Simatic Basic HMI Panel

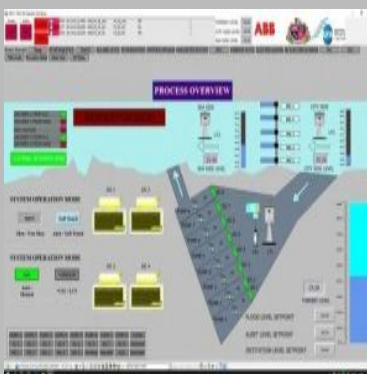


ABB Compact HMI Panel

Computer Hardware & Peripherals



TM3DI32K Schneider
Digital Input Module



TM3AI8G Schneider
Analog Input Module



Simatic 1221 Siemens
Digital Input Module



6ES7231-4HF32-0XB0
Siemens Analog Input
Module

Cpu



PM590-ETH ABB
Programmable Logic
Controller



6ES7214-1AG40-0XB0
Siemens CPU






6ES7212-1AE40-0XB0
Siemens CPU

Contact Us

Vishwa Automation & Control Solutions

Contact Person : Mr. Pradip Vishwakarma

-  Shop No.5, Savani Shopping Center, Kohinoor Road
-  08037878108
-  pradip@vishwaautomation.in
-  <https://www.exportersindia.com/vishwa-automation-control-solutions>